

Updated Announcement

Asian Battery Metals PLC (**ASX:AZ9**) (“**ABM**” or “**the Company**”) refers to the announcement made on 18 February 2025 with the header “Priority Areas Identified for Phase 3 Drilling at Oval” (**Announcement**).

The Company advises that the attached is the Announcement updated by:

- Adding coordinates to the maps in Figure 7
- Inclusion of Appendix I “Yambat Project 2022-2023 Soil Geochemical Survey Data: Material Element Assays and Sample Locations” referenced on page 9 of the Announcement.

This announcement is authorised for release by the Managing Director of Asian Battery Metals PLC.

-ENDS-

For further information, please contact:

Gan-Ochir Zunduisuren
Managing Director
Asian Battery Metals PLC

T: +976-99110973 , +61 492 840 272

E: ganochir@asianbatterymetals.com

ASX Announcement 20 February 2025

PRIORITY DRILLING AREAS IDENTIFIED AT OVAL Cu-Ni PROJECT FOR 2025 PHASE 3 EXPLORATION

Asian Battery Metals PLC (ABM or the Company, ASX: AZ9) is pleased to provide an update on the upcoming 2025 Phase 3 exploration program at the Oval Cu-Ni prospect in the southwestern part of Mongolia. The goal of the exploration program is to extend from last year’s intercepts of high-grade massive sulphide in drill holes OVD021¹, OVD025², OVD026³ and OVD027⁴, and to scout drill any extension of mineralisation discovered.

HIGHLIGHTS

- **The Phase 3 exploration program will commence in three weeks**
- **The program will consist of up to 1500 metres of diamond drilling. The primary focus of drilling areas (Figure 1) will be:**
 - **Untested or modified DHEM conductive plates from Phase 2**
 - **Follow down a high gravity inversion anomaly (up to 550 metres) directly below southern part of Oval gabbroic intrusion**
 - **Further focused exploration in six step-out potential drilling target areas identified within the detailed exploration area**
- **Downhole electromagnetic surveys will be completed in these additional drillholes.**
- **Regional geophysical surveys are planned for April to June 2025.**

On the Phase 3 exploration program, Gan-Ochir Zunduisuren, Managing Director of Asian Battery Metals PLC, commented: *“The 2025 Phase 3 exploration program will be key steps to further evaluate the extent of the magmatic copper and nickel sulphide mineralisation in our tenement. Three aspects of the program are to extend the current understanding of the high-grade zone within the Oval gabbroic body, to test potential deeper continuation of the gabbroic intrusion based on geophysical data and to scout drill other anomalies within the detailed exploration area.”*

Extensive regional geophysical surveys from 2022 to 2024 have delineated compelling exploration areas for drilling within the Yambat tenement area. These areas exhibit a strong spatial correlation, with elevated copper (Cu), nickel (Ni) and platinum group element (PGE) values coincident with high magnetic, gravity anomalies corresponding to IP resistivity lows.

¹ Previously reported in ASX announcement dated 28 October 2024 “Outstanding Copper-Nickel Discovery” and 31 October 2024 “Oval and Copper Ridge Announcement Clarification”.

² Previously reported in ASX announcement dated 16 December 2024 “High Grade Assay Results Confirmed at North Oval”.

³ Previously reported in ASX announcement dated 13 January 2025 “High Grade Massive Sulphide Intercepts Confirmed at Oval”.

⁴ Previously reported in ASX announcement dated 13 January 2025 “High Grade Massive Sulphide Intercepts Confirmed at Oval”.

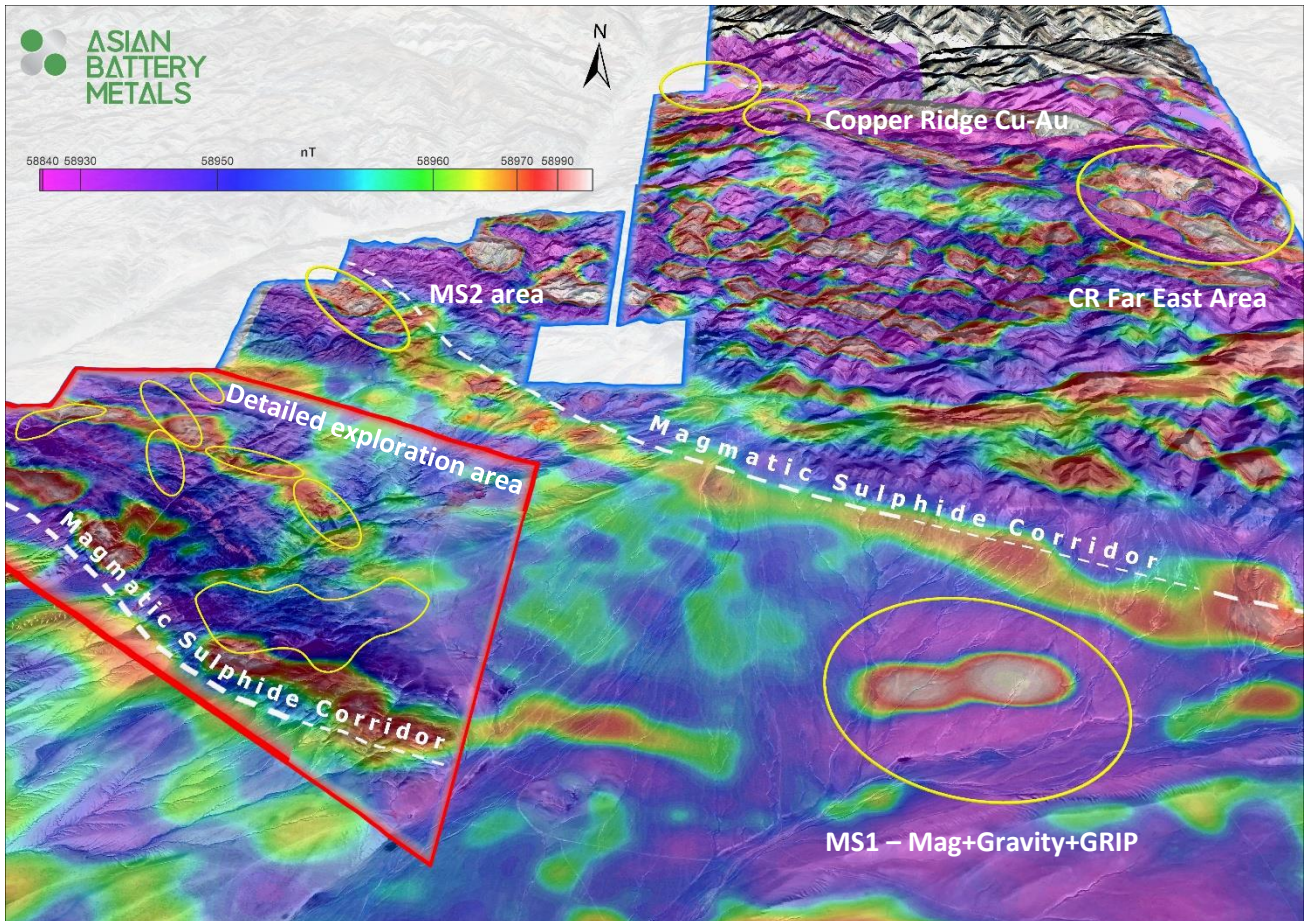


Figure 1. Target area map on ground magnetics (AGC) with tenement boundary

The target area selection process integrated these geophysical data with results from soil samples collected between 2022 and 2024 and analysed by ABM geologists. Physical property data from the samples has been integrated to improve the existing 3D geophysical models.

DOWNHOLE ELECTROMAGNETIC (DHEM) CONDUCTIVE PLATES

Priority DHEM conductive plates (Table 1)⁵ for testing during the Phase 3 drilling program will be those that extend the high-grade mineralisation further within the Oval gabbroic intrusion and also some outside the geologically known gabbro boundary.

Based on the current geological interpretation and geophysical data plates OVD021_Late_F (depth), OVD009_170-F (SE part of Oval), OVD026_L2_A (extension to north), OVD011_EOH_A (depth extension, combined with gravity anomaly testing) and OVD025_L6_B (North Oval) will be the priority plates for testing along with other target areas in the detailed exploration area from the following list of all initial and modified DHEM plates.

Location	Drillhole	Plate name	Conductivity Thickness	Model confidence	Channels modelled	Plate source	Updated date
Oval	OVD024	OVD024_C	8012	Moderate - Good	26 - 29	Modified	12/10/2024
Oval	OVD008	OVD008_L2_A	300	Poor	17 - 22	Initial	29/11/2024
North Oval	OVD025	OVD025_L6_B	13483	Good	25 - 29	Modified	2/12/2024
Oval	OVD027	OVD027_A	4754	Moderate - Good	25 - 29	Initial	29/11/2024
Oval	OVD026	OVD026_L2_A	1,470	Good	17 - 21	Initial	25/11/2024
Oval	OVD002	OVD002_L1_A	4,865	Moderate - Good	20 - 24	Modified	6/11/2024
Oval	OVD021	OVD021_Late_F	12,609	Moderate - Good	31 - 33	Modified	20/11/2024
Oval	OVD013	OVD13_L3_A	300	Good	17 - 21	Initial	6/11/2024
Oval	OVD012	OVD012_180-A	60	Moderate	16 - 19	Initial	6/11/2024
Oval	OVD009	OVD009_170-F	5000	Good	20 - 24	Modified	6/11/2024
Oval	OVD011	OVD011_EOH-A	800	Low	18 - 23	Initial	6/11/2024
Oval	OVD021	OVD021_G	11000	Moderate - Good	25-29	Modified Upgrade	20/11/2024 8/01/2025

Table 1. Phase 2 drilling untested and only partially tested DHEM survey plate details at end of Phase 2.

Note: DHEM plates with Modified status have been modified from the original models several times since their Initial interpretation as additional data of measurement emerges from DHEM from newly completed drillholes. Some of the plates will still be considered untested or partially tested if the main part of the plates is not tested after the processing of the data. Based on further geological and geophysical interpretation, the above plates could be downgraded or tested by future drilling. Further comprehensive geophysical studies are expected in 2025. "Initial" plate source means it was derived from interpretation of initial measurement from the DHEM. "Modified" plate source is assigned with modification of an old plate update (re-interpretation) after new measurement of DHEM in additional drillholes in the vicinity. Sometimes this can result in upgrading of the model confidence.

⁵ Previously reported in ASX announcement dated 13 January 2025 "High Grade Massive Sulphide Intercepts Confirmed at Oval".

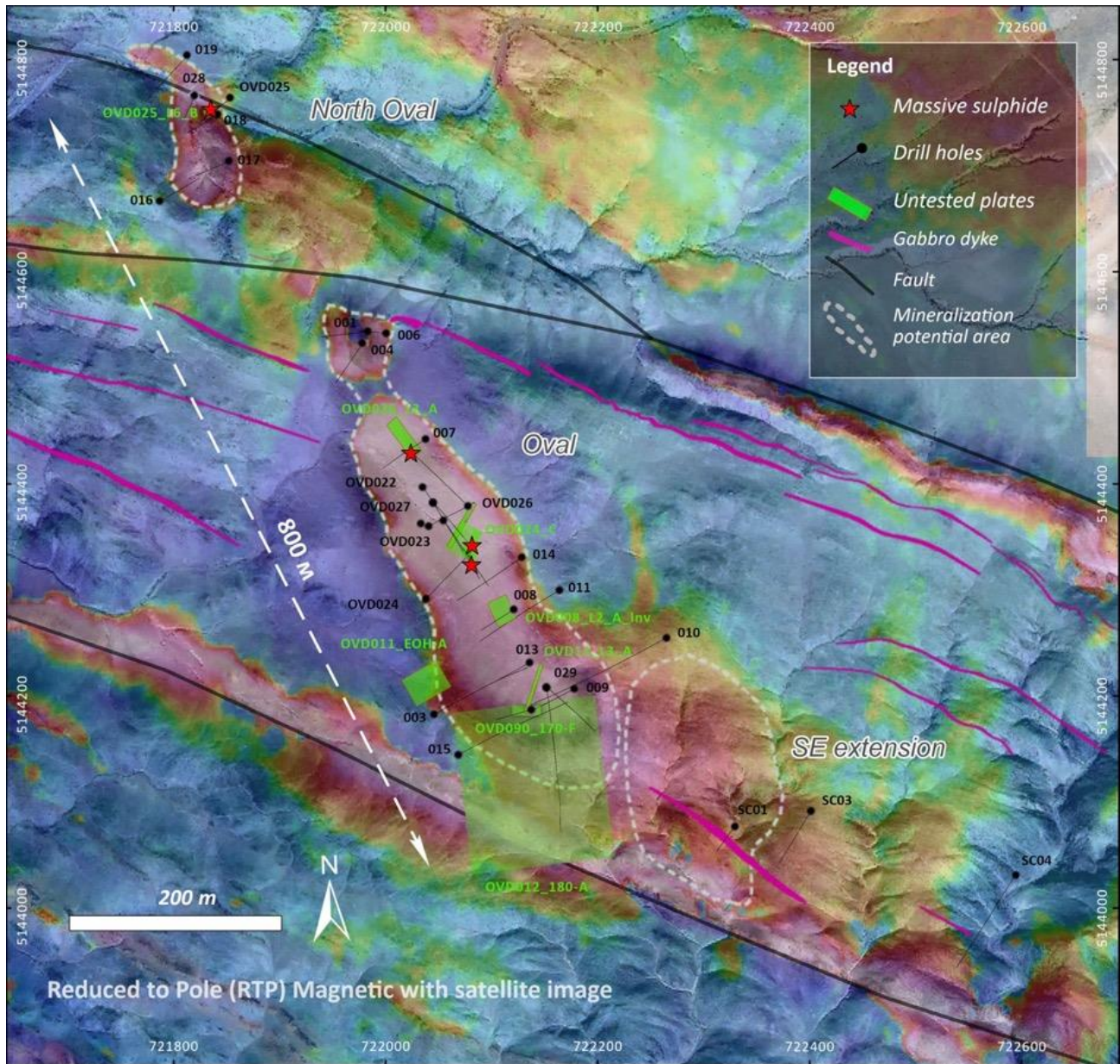


Figure 2. DHEM plates on ground magnetic (RTP) map

DEPTH EXTENSION TARGET AREAS

A gravity high anomaly identified in a revised inversion model of current gravity data will be tested during the Phase 3 drilling program.

Drillhole OVD010⁶, designed to test the gravity high anomaly during the 2024 Phase 1 program, encountered no significant mineralisation or gabbroic intrusive. The revised gravity model, incorporating detailed topographic and drillhole data, indicates OVD010 missed the core of the gravity anomaly without fully testing it.

The technical team is studying an optimal drill hole design to test this gravity high anomaly in combination with drilling of the OVD011_EOH-A plate⁷.

⁶ Previously reported in ASX announcement dated 28 October 2024 “Outstanding Copper-Nickel Discovery” and 31 October 2024 “Oval and Copper Ridge Announcement Clarification”.

⁷ Previously reported in ASX announcement dated 13 January 2025 “High Grade Massive Sulphide Intercepts Confirmed at Oval”.

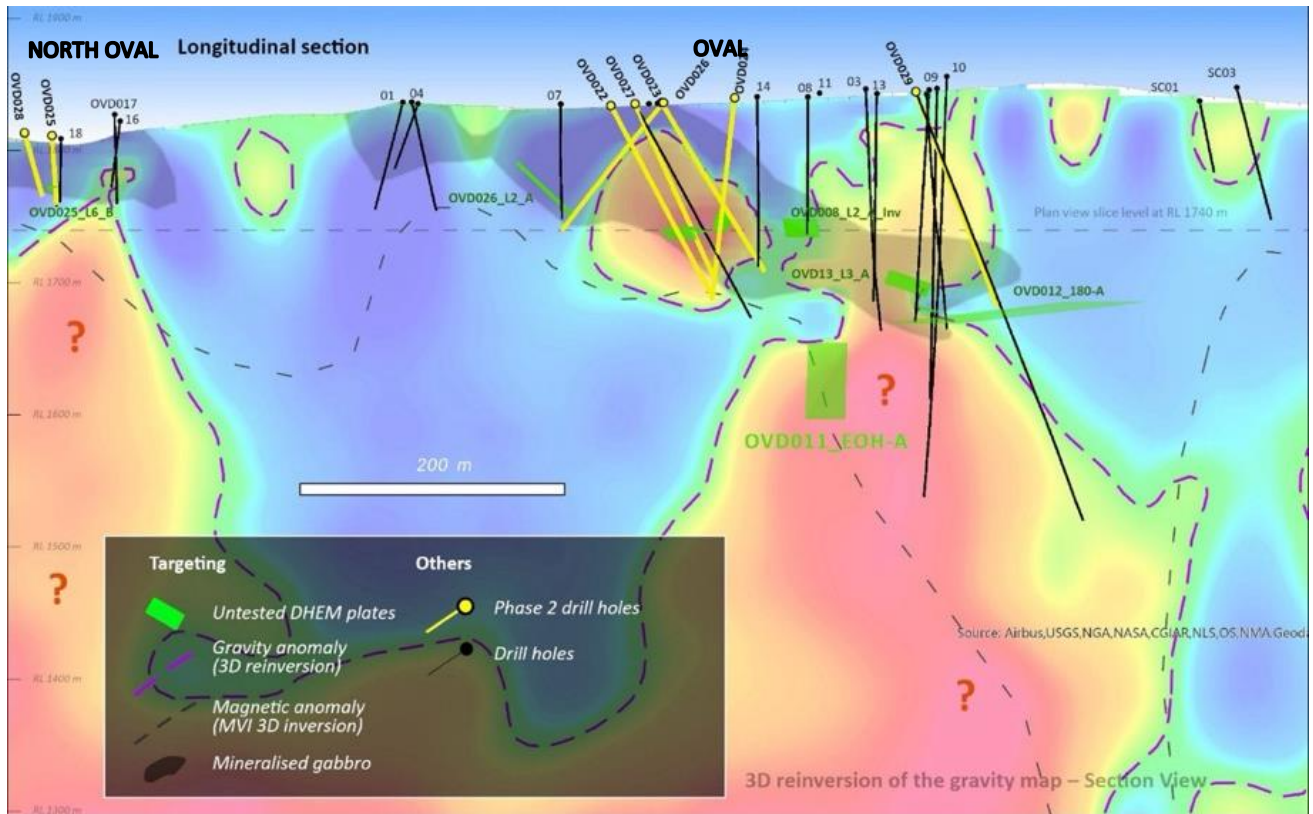


Figure 3. Longitudinal Section of 3D inversion of gravity survey

DETAILED EXPLORATION AREA

The geophysical signatures in the regional geological context may be spatially associated with the Oval intrusive, either along structural trends or parallel features (Figure 4 and 6). It is important to note that all of these areas are concealed beneath cover or sedimentary rocks, remain untested by drilling or other subsurface exploration methods, and their geological explanation is yet to be determined.

Six exploration areas have been prioritised in the 2025 Phase 3 Program for follow-up exploration drilling out of the approximately 30 areas initially defined by the geophysical surveys within the detailed exploration area in prior works. These prioritised areas display particularly robust geophysical signatures, characterised by coincident high magnetic and gravity responses, coupled with low resistivity or low magnetic and high gravity responses with low resistivity.

In addition, two highly prospective soil anomalies have been identified through analysis of samples previously collected and processed by ABM geologists (Figures 4 and 5). Their underlying geological explanation is yet to be determined and is being investigated, see detailed discussion on the Western and Southern soil anomalies below.

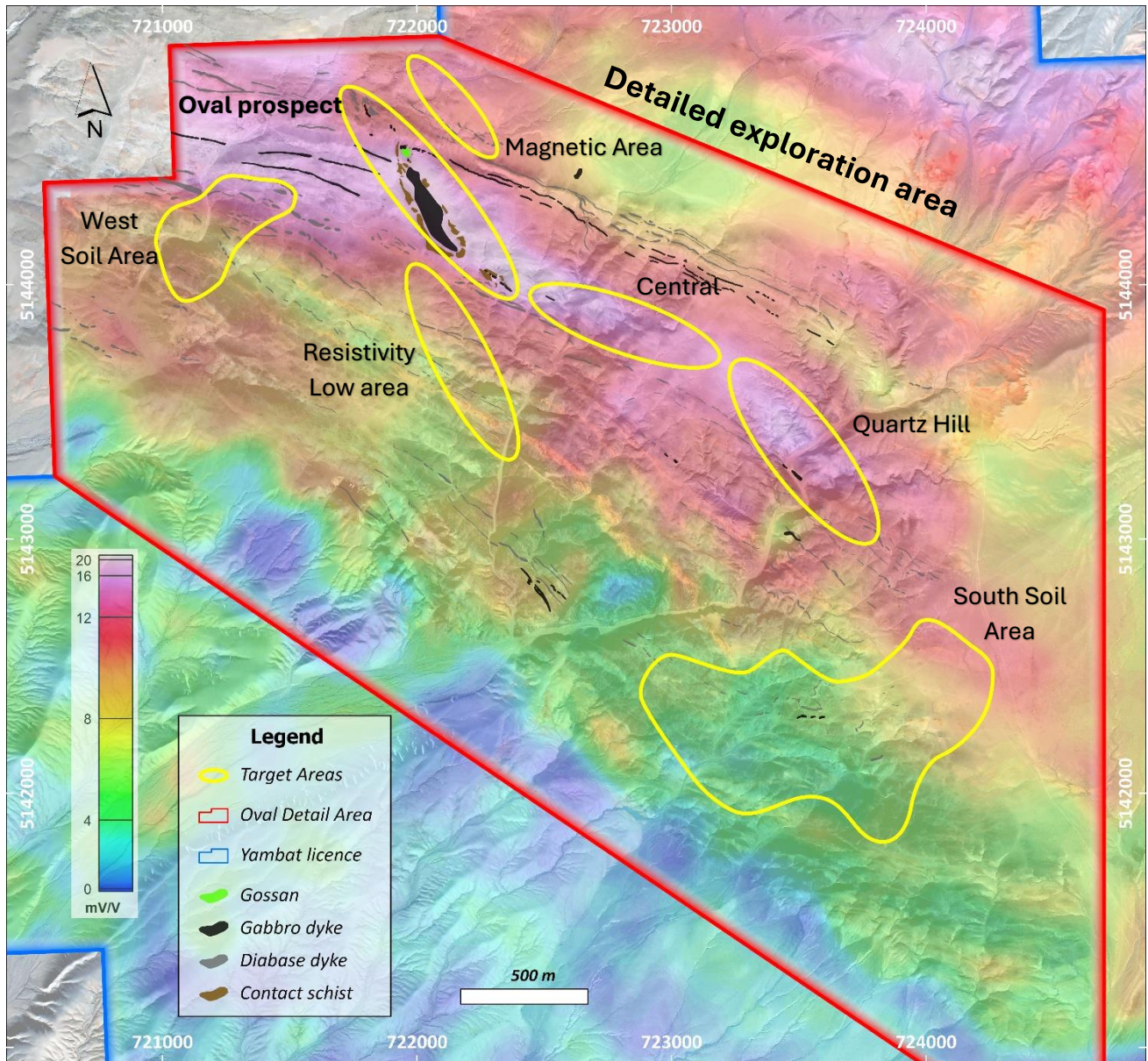


Figure 4. Exploration areas of interest for drilling on chargeability (IP) map

Current geological modeling and targeting work of cluster analysis by self-organising mapping (SOM) focus on anomalies using data obtained during the 2024 Phase 2 program. This includes measurements of density and magnetic susceptibility on cores and identification of exploration areas with features similar to those at depth below the Oval gabbroic intrusion. As disclosed in the ASX announcement dated 13 January 2025 “High Grade Massive Sulphide Interprets Confirmed At Oval”, the gravity data and inversion model indicates vertical high anomalies directly underneath Oval and North Oval.

Exploration areas	Oval Gabbroic Intrusion	Central area	South (Quartz Hill) area
Chargeability	High (proxy)	High (proxy)	High (proxy)
AMT	Resistivity low (from the surface and extending to depth)	Resistivity low (from the surface and extending to depth)	Resistivity low (large in-depth anomaly moderately correlates)
Gravity	High (partially relates to mineralized gabbro)	High (connecting to Oval mafic intrusion)	
Magnetic	High (partially relates to mineralized gabbroic rock)	High (partially)	Proximity (Mineralised gabbro outcrops on the surface (Quartz Hill) were found in the area)

Table 2. Geophysical signatures of exploration areas

In the detailed exploration area, GRIP (gradient-induced polarisation) and PDIP (pole-dipole) surveys delineated the Central and South (will be referred to as Quartz Hill) areas based on chargeability highs at 200-250 metres depth from the surface. Other studies, such as the CSAMT/AMT pilot program and 3D inversion of gravity, support these areas with indications of sub-vertical/vertical features. Refer to Figures 4 and 5.

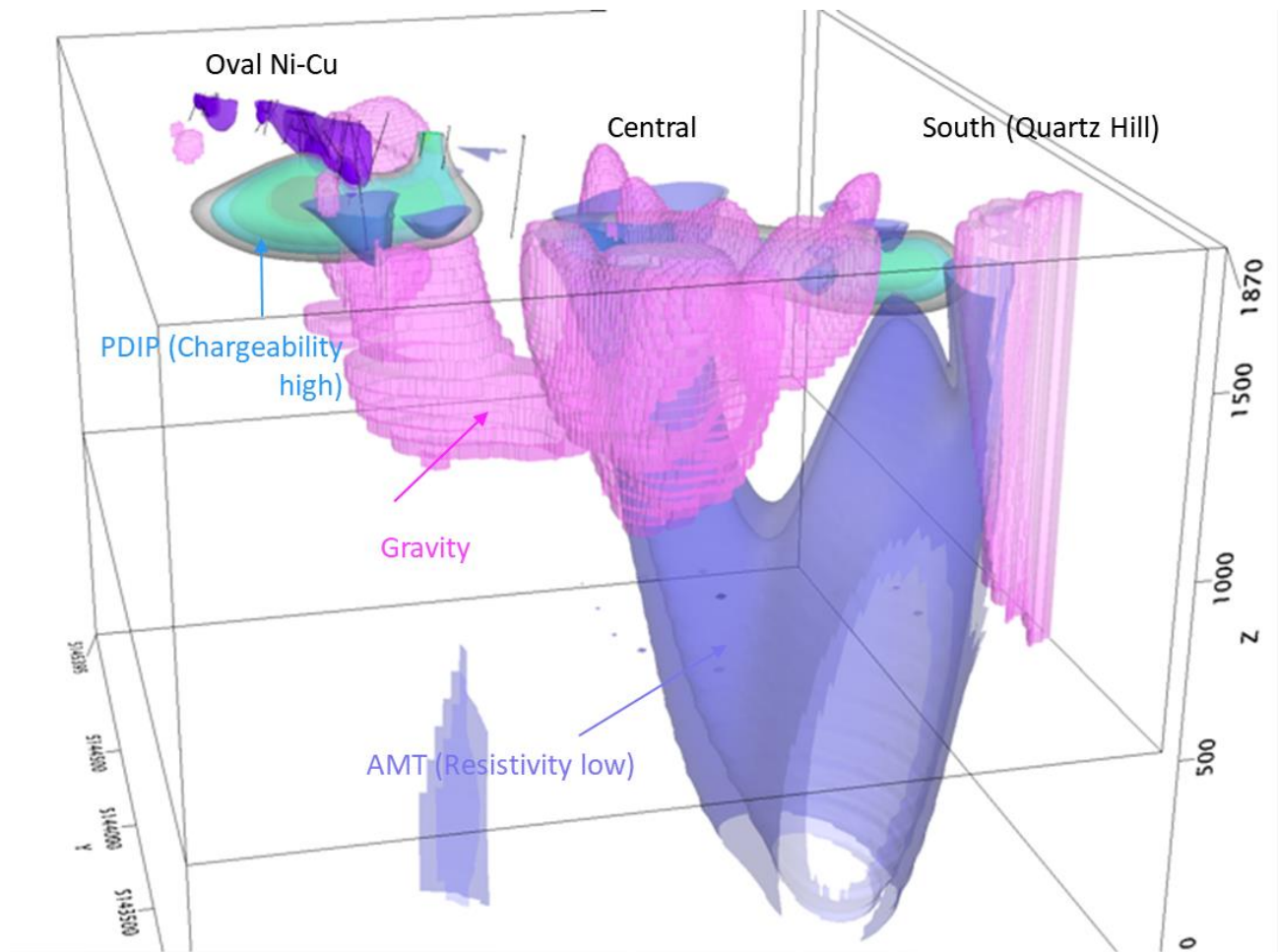


Figure 5. Geophysical correlation (3D inversions)

The AMT and CSAMT surveys delineated deeper targets with moderate to low resistivity zones (500-1000 $\Omega\cdot\text{m}$). These zones exhibit a spatial correlation with surface PDIP chargeability anomalies ($<18\text{ mV/V}$). This coincident geophysical response is further corroborated at depth by corresponding high gravity values ($0.043\text{ g/cc } <$), suggesting a coherent geological feature. The convergence of these independent geophysical datasets (resistivity, chargeability, and gravity) strengthens the interpretation of a significant subsurface region that warrants further investigation.

A grab sample collected from the gabbroic outcrop near Quartz Hill (South area, see Figure 6) returned anomalous copper and nickel values such as Cu 2150ppm, and Ni 408ppm in 2024, as disclosed in the ASX announcement “Regional Exploration Identifies New Copper & Nickel Targets” dated 6 August 2024. This result, together with the southeast-trending, high-chargeability corridor, suggests the potential for nickel and copper mineralised gabbroic intrusion(s) at depth in this area.

Parallel geophysical features around Oval gabbroic intrusions.

Depending on the results of planned geophysical surveys and further ground reconnaissance work, additional scout drilling may be needed in the resistivity low anomaly (southwest of Oval, see Figure 6) defined by gradient and resistivity IP (GRIP) and the Magnetic High (Magnetic Area, North of Oval).

Ground magnetics data-based structural interpretation is ongoing to increase understanding of geology and regional context. The modelling also covers the analysis of potential areas below the Oval intrusion in correlation with other identified geophysical anomalies, including the parallel geophysical feature of the magnetic high area (north of Oval) and the resistivity low area (south of Oval). Refer to Figures 4 and 6.

Parallel geophysical features are important from a geological and structural perspective. The Oval gabbroic intrusion is located in an oblique-angle fault lineament between two regional faults. The magnetic high anomaly (north east of Oval) and the resistivity low anomaly (GRIP, partially PDIP) are both parallel to the oblique angle indication formation in the same tectonic regime and possibly being related to mineralisation.

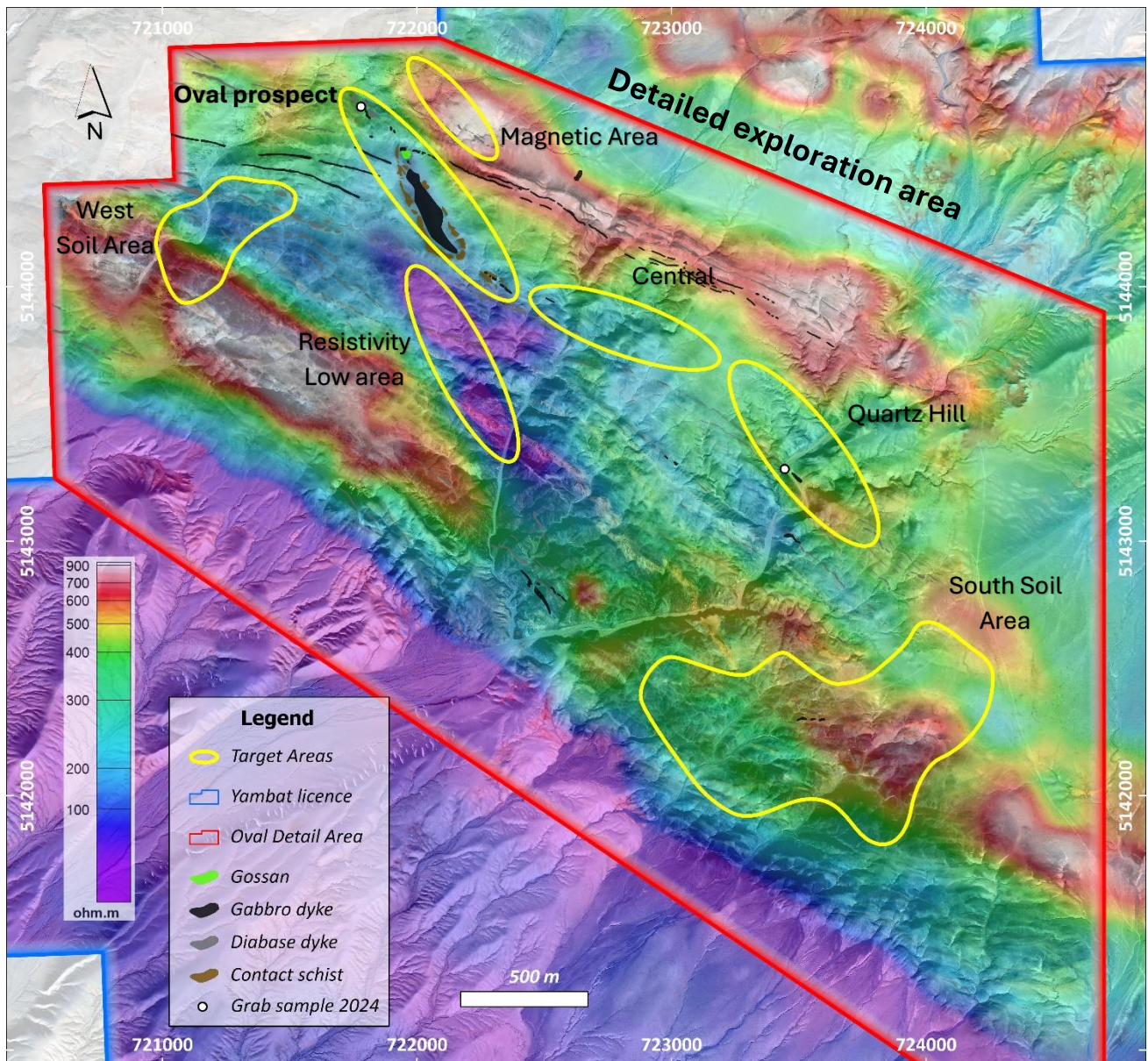


Figure 6. Exploration areas of interest for drilling on resistivity (IP) map

Western and South Soil Geochemistry Areas

In 2022-2023, 516 soil samples were collected on a north-south-oriented regular grid at 200m x 50m spacing. In addition, 121 soil samples were taken northeast-southwest-oriented at 50m x 25m spacing around the Oval prospect⁸ (see Appendix I – Yambat Project 2022-2023 Soil Survey Geochemical Survey Data: Material Element Assays and Sample Locations).

Southern Soil Area: Situated along the Oval trend, this area exhibits soil concentrations ranging from 59 to 229 ppm for Nickel (Ni), 31 to 83 ppm for Copper (Cu), and 3 to 14 ppb for Platinum Group Elements (PGEs). The geochemical anomaly parameters are similar to those of the Oval area in its early stages of exploration, prior to infill soil sampling.

Western Soil Area: Located west of Oval, this area shows soil concentrations ranging from 47 to 103 ppm for Ni, 29 to 114 ppm for Cu, and 3 to 12 ppb for PGEs. This soil geochemistry anomaly overlaps with the resistivity low feature, similar to Oval, but slightly offsets the general regional structure.

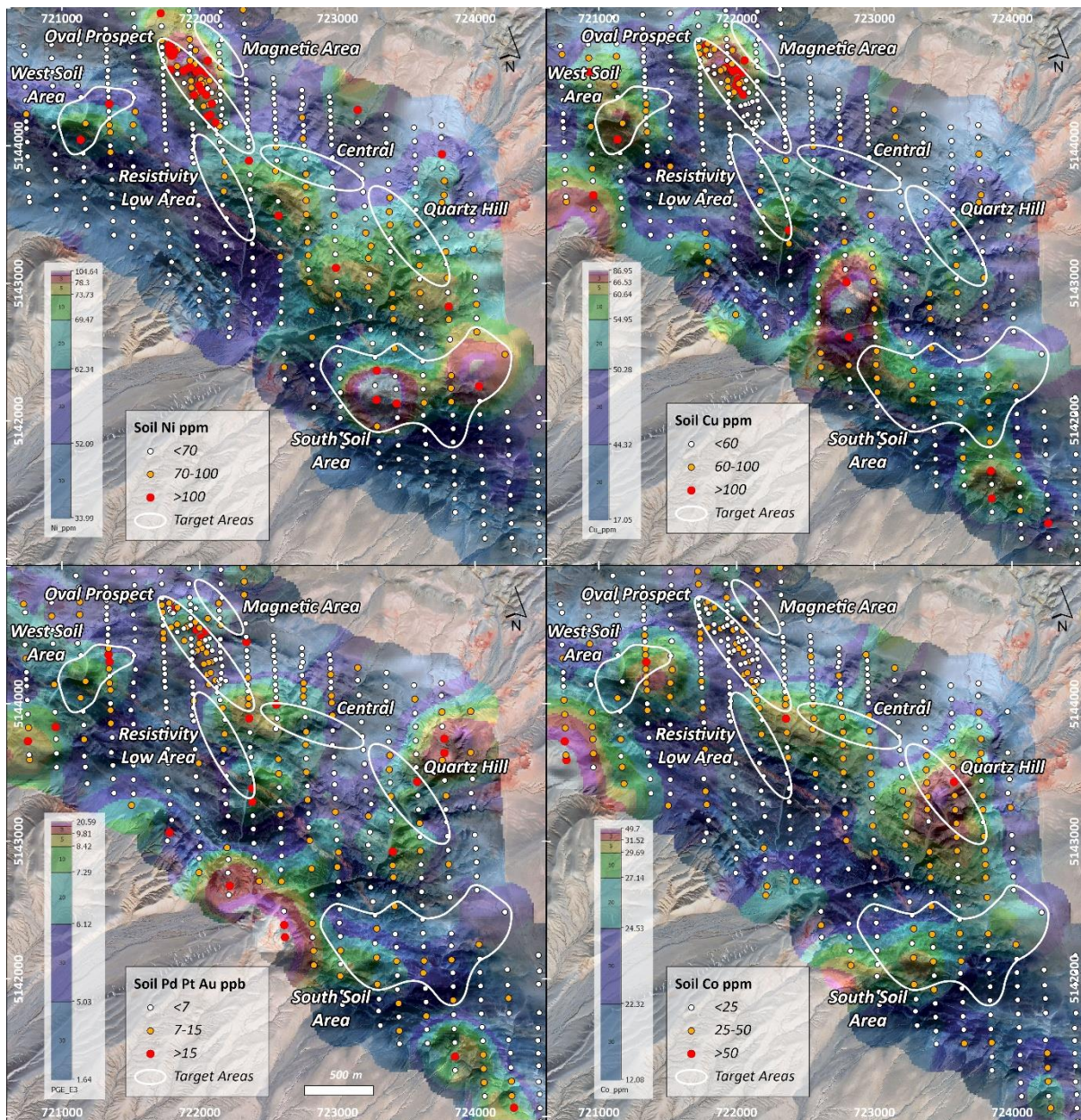


Figure 7. Multiple geophysical and soil geochemical anomalies support regional exploration potential

⁸ Previously reported in ASX announcement dated 30 April 2024 “Prospectus (section 4.4.3 of Independent Geologist Report)”

About Asian Battery Metals PLC

Asian Battery Metals PLC is a mineral exploration and development company focused on advancing the 100% owned Yambat (Oval Cu-Ni-PGE, Copper Ridge Cu-Au), Khukh Tag Graphite and Tsagaan Ders Lithium projects in Mongolia.

For more information and to register for investor updates please visit www.asianbatterymetals.com.

Approved for release by the Managing Director of Asian Battery Metals PLC.

For more information contact:**Gan-Ochir Zunduisuren**

Managing Director

ganochir@asianbatterymetals.com

+61 (0) 492 840 272 or +976 99110973

David Paull

Chairman

david@asianbatterymetals.com

+61 (0) 407 225 291

COMPETENT PERSON STATEMENT

The exploration results contained in this report are based on, and fairly and accurately represent the information and supporting documentation prepared by and under the supervision of Robert Dennis. Mr Dennis is a consultant contracted to ABM and a Member of the Australian Institute of Geoscientists. Mr Dennis has sufficient experience which is relevant to the styles of mineralisation and types of deposit under consideration and to the activity being undertaken to qualify as a Competent Person as defined in the 2012 Edition of the Australasian Code for Reporting of Exploration Results, Exploration Targets, Mineral Resources and Ore Reserves. Mr Dennis consents to the inclusion in the report of the matters based on the exploration results in the form and context in which they appear.

FORWARD-LOOKING STATEMENTS

Certain statements contained in this announcement may constitute forward-looking statements, estimates and projections which by their nature involve substantial risks and uncertainties because they relate to events and depend on circumstances that may or may not occur in the future. When used in this announcement, the words “anticipate”, “expect”, “estimate”, “forecast”, “will”, “planned”, and similar expressions are intended to identify forward-looking statements or information. Such statements include without limitation: statements regarding timing and amounts of capital expenditures and other assumptions; estimates of future reserves, resources, mineral production, optimisation efforts and sales; estimates of mine life; estimates of future internal rates of return, mining costs, cash costs, mine site costs and other expenses; estimates of future capital expenditures and other cash needs, and expectations as to the funding thereof; statements and information as to the projected development of certain ore deposits, including estimates of exploration, development and production and other capital costs, and estimates of the timing of such exploration, development and production or decisions with respect to such exploration, development and production; estimates of reserves and resources, and statements and information regarding anticipated future exploration; the anticipated timing of events with respect to the Company’s projects and statements; strategies and the industry in which the Company operates and information regarding the sufficiency of the Company’s cash resources. Such statements and information reflect the Company’s views, intentions or current expectations and are subject to certain risks, uncertainties and assumptions, and undue reliance should not be placed on such statements and information. Many factors, known and unknown could cause the actual results, outcomes and developments to be materially different, and to differ adversely, from those expressed or implied by such forward-looking statements and information and past performance is no guarantee of future performance. Such risks and factors include, but are not limited to: the volatility of commodity prices; uncertainty of mineral reserves, mineral resources, mineral grades and mineral recovery estimates; uncertainty of future production, capital expenditures, and other costs; currency fluctuations; financing of additional capital requirements; cost of exploration and development programs; mining risks; community protests; risks associated with foreign operations; governmental and environmental regulation; and the volatility of the Company’s stock price. There can be no assurance that forward-looking statements will prove to be correct.

COMPLIANCE STATEMENT

This announcement refers to the Oval Cu-Ni-PGE project.

Previous ASX announcements on the Oval Cu-Ni-PGE project are:

30 April 2024 – Prospectus

6 August 2024 – Regional Drilling Identifies New Copper and Nickel Targets

7 August 2024 – Updated JORC Table

18 September 2024 – Massive Sulphide Mineralisation Confirmed at Yambat Project

23 September 2024 – Updated Announcement – Yambat Project Drilling Program Results

28 October 2024 – Outstanding Copper-Nickel Discovery

31 October 2024 – Oval and Copper Ridge Announcement Clarification

06 November 2024 – Drilling Recommenced At Oval Cu-Ni-PGE Project

22 November 2024 – Additional Massive Sulphide Mineralisation Confirmed at North Oval

25 November 2024 – Massive Sulphide Intercepted From DHEM Targeting

02 December 2024 – Massive Sulphide Intercepts Continue in OVD027

16 December 2024 – High Grade Assay Results Confirmed at North Oval

13 January 2025 – High Grade Massive Sulphide Intercepts Confirmed At Oval

12 February 2025 – Updated Investor Presentation

The Company confirms is not aware of any other new information or data that materially affects the exploration results included in these announcements. The Company further confirms that the form and context in which the Competent Person's findings are presented have not been materially modified from the original market announcements.

Yambat Project 2022-203 Soil Survey Geochemical Survey

Data: Material Element Assays and Sample Locations

No	Sample ID	Longitude	Latitude	Au (ppb)	Pt (ppb)	Pd (ppb)	Cu (ppm)	Ni (ppm)	Co (ppm)
1	S1-1	720580	5143677	1	<10	<1	58	39	28
2	S1-2	720555	5143818	5	<10	4	117	47	25
3	S1-3	720575	5143918	5	<10	4	64	49	41
4	S1-4	720565	5144022	2	<10	2	47	45	26
5	S1-5	720556	5144115	3	<10	<1	22	37	19
6	S1-6	720559	5144222	<1	<10	<1	28	43	19
7	S1-7	720585	5144325	2	<10	2	48	63	24
8	S1-8	720563	5144420	3	<10	4	51	69	36
9	S1-9	720578	5144523	<1	<10	2	47	53	26
10	S1-10	720577	5144595	1	<10	<1	27	41	17
11	S1-11	720556	5144785	2	<10	2	63	37	20
12	S2-1	720766	5143591	5	<10	6	73	42	64
13	S2-2	720761	5143627	4	<10	<1	50	39	29
14	S2-3	720753	5143726	17	<10	6	53	29	58
15	S2-4	720757	5143824	3	<10	6	56	51	35
16	S2-5	720752	5143922	4	<10	2	32	30	27
17	S2-6	720748	5144026	4	<10	<1	44	48	27
18	S2-7	720744	5144126	2	<10	<1	32	45	24
19	S2-8	720741	5144176	2	<10	<1	34	70	25
20	S2-9	720742	5144228	4	<10	<1	59	77	25
21	S2-10	720738	5144328	8	<10	5	58	68	27
22	S2-11	720733	5144428	5	<10	<1	37	59	22
23	S2-12	720732	5144532	8	<10	<1	29	50	19
24	S2-13	720733	5144661	5	<10	<1	65	43	21
25	S2-14	720721	5144721	12	<10	<1	37	43	20
26	S3-1	720961	5143537	4	<10	2	95	51	21
27	S3-2	720961	5143638	2	<10	4	102	57	36
28	S3-3	720958	5143742	3	<10	<1	46	59	29
29	S3-4	720954	5143830	12	<10	5	75	50	33
30	S3-5	720951	5143938	1	<10	<1	35	59	27
31	S3-6	720946	5144038	6	<10	<1	23	42	17
32	S3-7	720943	5144137	4	<10	3	64	70	23
33	S3-8	720936	5144244	<1	<10	<1	40	63	21
34	S3-9	720938	5144334	6	<10	4	51	77	23
35	S3-10	720934	5144434	2	<10	<1	46	57	30
36	S3-11	720929	5144534	4	<10	<1	107	29	22
37	S3-12	720927	5144634	7	<10	<1	62	51	13
38	S3-13	720924	5144734	<1	<10	<1	22	46	16
39	S3-14	720918	5144834	<1	<10	1	28	53	19
40	S4-1	721183	5143419	2	<10	3	60	54	41

41	S4-2	721170	5143540	3	<10	<1	47	58	31
42	S4-3	721162	5143619	3	<10	<1	33	37	16
43	S4-4	721160	5143739	3	<10	4	50	59	37
44	S4-5	721159	5143844	2	<10	<1	50	47	23
45	S4-6	721155	5143944	4	<10	<1	40	53	21
46	S4-7	721136	5144042	3	<10	8	114	102	30
47	S4-8	721172	5144162	5	<10	2	71	76	24
48	S4-9	721141	5144241	3	<10	<1	23	45	21
49	S4-10	721138	5144351	3	<10	<1	59	59	25
50	S4-11	721115	5144437	3	<10	2	62	22	16
51	S4-12	721143	5144543	2	<10	<1	47	42	21
52	S4-13	721129	5144646	6	<10	1	96	38	24
53	S4-13	721131	5144739	6	<10	1	44	43	17
54	S4-15	721125	5144845	4	<10	2	39	50	25
55	S4-16	721102	5144929	5	<10	<1	41	56	21
56	S5-1	721319	5144948	2	<10	<1	37	65	21
57	S5-2	721320	5144847	4	<10	1	53	65	20
58	S5-3	721323	5144747	3	<10	<1	42	53	20
59	S5-4	721326	5144700	3	<10	1	49	64	20
60	S5-5	721326	5144645	3	<10	<1	51	43	23
61	S5-6	721323	5144607	2	<10	<1	52	41	22
62	S5-7	721335	5144547	2	<10	1	46	36	19
63	S5-8	721332	5144497	3	<10	<1	43	55	29
64	S5-9	721333	5144451	2	<10	1	33	27	18
65	S5-10	721337	5144400	3	<10	5	57	50	33
66	S5-11	721339	5144353	6	<10	9	55	69	29
67	S5-12	721345	5144302	5	<10	12	89	103	97
68	S5-13	721341	5144251	4	<10	5	69	61	26
69	S5-14	721344	5144200	4	<10	2	58	63	26
70	S5-15	721345	5144148	4	<10	4	56	73	34
71	S5-16	721352	5144098	4	<10	8	70	87	40
72	S5-17	721351	5144055	2	<10	<1	29	47	18
73	S5-18	721352	5143999	2	<10	<1	43	59	22
74	S5-19	721353	5143953	6	<10	4	50	85	29
75	S5-20	721355	5143856	5	<10	2	63	59	22
76	S5-21	721364	5143753	2	<10	<1	28	39	18
77	S5-22	721358	5143645	3	<10	<1	39	45	25
78	S5-23	721370	5143550	4	<10	<1	46	45	24
79	S5-24	721373	5143452	3	<10	<1	47	43	25
80	S5-25	721378	5143350	2	<10	<1	42	49	21
81	S6-1	721517	5144957	2	<10	4	51	68	24
82	S6-2	721526	5144859	<1	<10	<1	34	49	18
83	S6-3	721501	5144752	11	<10	<1	49	61	25
84	S6-4	721517	5144645	4	<10	<1	40	50	24
85	S6-5	721529	5144544	2	<10	<1	48	43	25
86	S6-6	721530	5144454	3	<10	<1	34	44	20
87	S6-7	721523	5144349	2	<10	<1	29	42	18

88	S6-8	721533	5144247	3	<10	1	54	72	35
89	S6-9	721519	5144151	3	<10	2	60	74	38
90	S6-10	721517	5144052	3	<10	<1	40	67	27
91	S6-11	721500	5143953	3	<10	<1	46	62	24
92	S6-12	721519	5143849	6	<10	<1	76	60	23
93	S6-13	721519	5143747	4	<10	<1	34	39	24
94	S6-14	721513	5143617	11	<10	<1	39	45	22
95	S6-15	721519	5143550	3	<10	<1	37	44	22
96	S6-16	721519	5143448	2	<10	<1	34	43	22
97	S6-17	721519	5143345	2	<10	<1	49	41	25
98	S6-18	721505	5143260	10	<10	<1	58	54	26
99	S7-1	721717	5144962	2	<10	3	25	134	28
100	S7-2	721724	5144868	1	<10	3	30	29	26
101	S7-3	721726	5144764	2	<10	<1	59	71	25
102	S7-4	721726	5144714	6	<10	1	61	61	25
103	S7-5	721731	5144664	6	<10	2	83	67	24
104	S7-6	721733	5144618	2	<10	<1	48	51	23
105	S7-7	721733	5144565	3	<10	<1	39	40	19
106	S7-8	721736	5144514	3	<10	5	53	54	36
107	S7-9	721737	5144468	6	<10	5	60	65	27
108	S7-10	721739	5144416	3	<10	<1	54	44	23
109	S7-11	721741	5144366	4	<10	<1	41	45	22
110	S7-12	721743	5144303	3	<10	2	49	52	25
111	S7-13	721743	5144254	1	<10	<1	33	45	19
112	S7-14	721746	5144215	5	<10	<1	65	61	23
113	S7-15	721746	5144163	4	<10	<1	37	53	32
114	S7-16	721749	5144117	2	<10	<1	31	53	24
115	S7-17	721754	5144015	3	<10	1	42	52	25
116	S7-18	721758	5143966	1	<10	<1	42	65	26
117	S7-19	721763	5143863	<1	<10	2	45	63	23
118	S7-20	721763	5143762	<1	<10	1	53	79	25
119	S7-21	721769	5143669	2	<10	<1	35	57	29
120	S7-22	721771	5143566	2	<10	<1	33	45	22
121	S7-23	721763	5143454	<1	<10	<1	34	48	21
122	S7-24	721775	5143363	2	<10	3	67	55	26
123	S7-25	721784	5143267	5	<10	<1	76	50	27
124	S7-26	721796	5143154	1	<10	4	61	54	22
125	S7-27	721782	5143063	4	<10	12	82	47	24
126	S7-28	721765	5143003	<1	<10	2	33	45	21
127	S8-1	721922	5144980	3	<10	3	56	19	8
128	S8-2	721922	5144870	<1	<10	<1	47	65	25
129	S8-3	721928	5144770	<1	<10	5	57	80	33
130	S8-4	721933	5144720	<1	<10	<1	43	58	22
131	S8-5	721932	5144670	<1	<10	2	43	57	21
132	S8-6	721931	5144618	<1	<10	1	54	72	24
133	S8-7	721934	5144569	4	<10	<1	180	168	22
134	S8-8	721935	5144521	19	<10	7	1340	1147	65

135	S8-9	721938	5144471	<1	<10	2	75	94	22
136	S8-10	721939	5144421	<1	<10	1	69	93	22
137	S8-11	721946	5144374	<1	<10	<1	35	58	20
138	S8-12	721942	5144322	2	<10	<1	34	49	19
139	S8-13	721944	5144272	6	<10	<1	39	53	19
140	S8-14	721947	5144158	3	<10	2	50	40	19
141	S8-15	721950	5144121	<1	<10	2	37	48	22
142	S8-16	721951	5144070	<1	<10	<1	29	51	22
143	S8-17	721956	5144019	4	<10	4	40	61	25
144	S8-18	721953	5143969	2	<10	4	48	63	20
145	S8-19	721943	5143913	<1	<10	2	42	63	25
146	S8-20	721957	5143871	2	<10	<1	29	50	19
147	S8-21	721967	5143773	5	<10	4	43	58	18
148	S8-22	721966	5143668	2	<10	2	37	57	20
149	S8-23	721993	5143567	6	<10	2	54	53	19
150	S8-24	721973	5143471	<1	<10	<1	32	44	20
151	S8-25	721979	5143373	2	<10	2	37	55	20
152	S8-26	721983	5143270	<1	<10	1	42	58	22
153	S8-27	721984	5143172	<1	<10	<1	31	46	21
154	S8-28	721989	5143071	2	<10	<1	46	49	22
155	S8-29	722002	5142961	2	<10	2	23	34	22
156	S8-30	721996	5142875	2	<10	3	53	50	23
157	S8-31	721994	5142771	4	<10	3	70	53	22
158	S9-1	722212	5142610	1	<10	3	46	54	26
159	S9-2	722219	5142676	49	<10	9	57	48	28
160	S9-3	722204	5142771	<1	<10	<1	42	52	21
161	S9-4	722208	5142867	1	<10	4	33	43	18
162	S9-5	722199	5142953	3	<10	4	47	60	27
163	S9-6	722177	5143068	5	<10	<1	46	57	20
164	S9-7	722205	5143182	3	<10	<1	53	57	19
165	S9-8	722189	5143272	3	<10	2	59	53	20
166	S9-9	722179	5143367	3	<10	2	58	58	19
167	S9-10	722194	5143474	2	<10	<1	50	61	21
168	S9-11	722166	5143570	2	<10	<1	40	55	18
169	S9-12	722174	5143668	3	<10	4	71	82	22
170	S9-13	722181	5143778	2	<10	6	51	79	38
171	S9-14	722185	5143883	2	<10	2	47	71	23
172	S9-15	722166	5143968	7	<10	6	52	61	31
173	S9-16	722148	5144026	<1	<10	2	48	48	27
174	S9-17	722128	5144081	3	<10	3	42	55	26
175	S9-18	722122	5144118	<1	<10	<1	47	61	27
176	S9-19	722139	5144166	<1	<10	<1	18	40	18
177	S9-20	722152	5144178	<1	<10	<1	25	55	22
178	S9-21	722156	5144220	<1	<10	<1	33	52	21
179	S9-22	722164	5144270	<1	<10	<1	34	50	20
180	S9-23	722152	5144325	<1	<10	1	35	54	20
181	S9-24	722150	5144371	<1	<10	<1	35	52	20

182	S9-25	722148	5144422	<1	<10	1	34	49	19
183	S9-26	722151	5144468	<1	<10	<1	51	59	24
184	S9-27	722155	5144530	1	<10	1	30	44	17
185	S9-28	722154	5144570	3	<10	4	58	95	30
186	S9-29	722146	5144617	<1	<10	4	45	59	25
187	S9-30	722142	5144674	<1	<10	<1	29	51	21
188	S9-31	722138	5144728	1	10	3	33	47	22
189	S9-32	722161	5144768	<1	<10	2	36	46	25
190	S9-33	722152	5144868	2	<10	1	42	58	26
191	S9-34	722153	5144972	<1	<10	<1	43	57	31
192	S9-35	722144	5145071	<1	<10	<1	30	48	21
193	S9-36	722182	5145171	2	<10	<1	30	41	17
194	S9-37	722141	5145243	1	<10	2	46	57	24
195	S10-1	722431	5142709	5	<10	8	52	59	32
196	S10-2	722400	5142784	2	<10	<1	40	51	25
197	S10-3	722397	5142882	1	<10	<1	43	51	22
198	S10-4	722392	5142986	2	<10	2	36	54	22
199	S10-5	722390	5143087	3	<10	2	52	55	22
200	S10-6	722385	5143184	1	<10	<1	43	52	21
201	S10-7	722382	5143286	10	<10	5	73	53	21
202	S10-8	722381	5143384	12	<10	5	110	61	23
203	S10-9	722367	5143493	2	<10	<1	58	61	23
204	S10-10	722373	5143611	1	<10	3	51	69	27
205	S10-11	722366	5143682	2	<10	3	46	63	24
206	S10-12	722365	5143790	<1	<10	<1	35	57	32
207	S10-13	722358	5143892	7	<10	15	95	107	58
208	S10-14	722354	5143990	6	<10	5	51	67	32
209	S10-15	722358	5144040	6	<10	1	46	53	26
210	S10-16	722351	5144088	5	<10	<1	32	49	22
211	S10-17	722348	5144137	2	<10	1	32	51	22
212	S10-18	722350	5144187	6	<10	6	50	61	23
213	S10-19	722349	5144237	<1	<10	1	44	65	24
214	S10-20	722345	5144285	<1	<10	<1	36	56	21
215	S10-21	722343	5144337	<1	<10	<1	34	48	19
216	S10-22	722340	5144386	<1	<10	<1	34	50	18
217	S10-23	722339	5144446	13	<10	5	51	24	15
218	S10-24	722337	5144484	2	<10	2	52	62	22
219	S10-25	722334	5144581	<1	<10	1	26	48	16
220	S10-26	722323	5144789	5	<10	3	34	50	17
221	S10-27	722323	5144885	3	<10	6	55	59	25
222	S10-28	722315	5144989	<1	<10	9	59	71	28
223	S11-1	722618	5142303	11	<10	9	40	46	19
224	S11-2	722614	5142390	7	<10	17	71	79	29
225	S11-3	722612	5142492	2	<10	3	71	69	23
226	S11-4	722605	5142595	3	<10	2	37	53	19
227	S11-5	722593	5142708	4	<10	7	48	69	24
228	S11-6	722591	5142793	1	<10	1	50	62	22

229	S11-7	722595	5142893	1	<10	1	39	60	21
230	S11-8	722593	5142987	1	<10	1	38	54	18
231	S11-9	722588	5143095	<1	<10	<1	31	54	19
232	S11-10	722586	5143193	7	<10	6	26	74	24
233	S11-11	722582	5143292	1	<10	1	34	56	18
234	S11-12	722577	5143390	1	<10	2	40	61	20
235	S11-13	722573	5143491	4	<10	6	53	117	35
236	S11-14	722570	5143595	8	<10	2	50	68	25
237	S11-16	722552	5143815	1	<10	1	47	72	27
238	S11-17	722561	5143892	1	<10	2	41	69	29
239	S11-18	722556	5143992	19	<10	9	69	75	34
240	S11-19	722554	5144043	2	<10	2	38	53	22
241	S11-20	722553	5144094	<1	<10	<1	33	56	20
242	S11-21	722550	5144137	1	<10	2	35	49	18
243	S11-22	722548	5144191	<1	<10	1	33	52	18
244	S11-23	722546	5144244	<1	<10	1	28	51	17
245	S11-24	722545	5144300	<1	<10	1	50	62	22
246	S11-25	722537	5144343	2	<10	4	51	56	26
247	S11-26	722539	5144389	<1	<10	2	44	48	19
248	S11-27	722540	5144446	<1	<10	<1	27	46	16
249	S11-28	722534	5144490	<1	<10	2	27	44	15
250	S11-29	722528	5144608	2	<10	2	39	57	21
251	S11-30	722529	5144692	2	<10	<1	24	48	16
252	S11-31	722522	5144993	2	<10	3	48	57	26
253	S11-32	722519	5145137	2	<10	4	28	42	16
254	S12-1	722829	5142099	4	<10	6	43	62	46
255	S12-2	722827	5142204	4	<10	3	36	41	21
256	S12-3	722820	5142303	1	<10	3	40	58	20
257	S12-4	722816	5142403	4	<10	3	95	61	25
258	S12-5	722816	5142503	<1	<10	2	35	64	22
259	S12-6	722816	5142609	2	<10	3	108	71	23
260	S12-7	722807	5142698	1	<10	3	56	62	21
261	S12-8	722812	5142799	7	<10	5	93	72	24
262	S12-9	722798	5142902	1	<10	<1	38	61	22
263	S12-10	722798	5143006	3	<10	4	196	88	31
264	S12-11	722791	5143100	<1	<10	1	49	60	22
265	S12-12	722788	5143203	2	<10	1	46	73	26
266	S12-13	722783	5143299	7	<10	3	61	76	22
267	S12-14	722782	5143401	3	<10	<1	39	66	22
268	S12-15	722775	5143501	5	<10	3	38	72	32
269	S12-16	722774	5143601	1	<10	1	65	87	33
270	S12-17	722770	5143701	6	<10	5	59	75	33
271	S12-18	722772	5143793	5	<10	4	60	78	35
272	S12-19	722767	5143901	1	<10	3	42	60	26
273	S12-20	722757	5144002	1	<10	1	36	52	21
274	S12-21	722751	5144051	2	<10	5	64	72	27
275	S12-22	722754	5144101	6	<10	2	44	66	25

276	S12-23	722753	5144148	4	<10	3	54	54	24
277	S12-24	722743	5144204	3	<10	3	49	73	46
278	S12-25	722735	5144264	2	<10	2	43	46	19
279	S12-26	722747	5144301	2	<10	4	58	57	24
280	S12-27	722743	5144352	<1	<10	2	34	52	19
281	S12-28	722741	5144403	<1	<10	1	32	51	18
282	S12-29	722721	5144997	4	<10	6	33	46	28
283	S12-30	722709	5145129	1	<10	1	46	64	30
284	S13-1	722949	5144313	<1	<10	2	37	61	22
285	S13-2	722948	5144257	3	<10	2	41	57	20
286	S13-3	722950	5144210	2	<10	5	50	57	24
287	S13-4	722952	5144159	3	<10	3	46	34	16
288	S13-5	722953	5144110	2	<10	<1	36	36	15
289	S13-6	722956	5144056	4	<10	6	54	55	22
290	S13-7	722957	5144006	4	<10	3	48	70	25
291	S13-8	722963	5143913	4	<10	3	44	58	30
292	S13-9	722965	5143803	2	<10	3	42	60	26
293	S13-10	722963	5143699	3	<10	2	38	59	27
294	S13-11	722972	5143612	2	<10	3	56	66	28
295	S13-12	722976	5143494	2	<10	4	72	73	30
296	S13-13	722980	5143412	<1	<10	2	41	61	28
297	S13-14	722984	5143313	3	<10	3	47	62	23
298	S13-15	722985	5143212	4	<10	4	55	53	22
299	S13-16	722989	5143112	3	<10	3	75	107	26
300	S13-17	722994	5143011	1	<10	2	73	69	24
301	S13-18	723008	5142918	5	<10	6	17	71	26
302	S13-19	722998	5142813	5	<10	2	89	66	25
303	S13-20	723007	5142706	2	<10	2	51	53	20
304	S13-21	723008	5142608	2	<10	<1	45	55	19
305	S13-22	723017	5142506	3	<10	3	68	70	23
306	S13-23	723014	5142408	2	<10	4	66	61	22
307	S13-24	723020	5142310	2	<10	2	64	59	21
308	S13-25	723022	5142207	5	<10	4	60	64	25
309	S13-26	723022	5142106	2	<10	1	49	64	25
310	S13-27	723020	5142021	6	<10	5	33	50	25
311	S13-28	723034	5141906	5	<10	<1	13	11	25
312	S13-29	723037	5141814	1	<10	1	51	47	22
313	S13-30	723041	5141707	<1	<10	<1	35	49	22
314	S13-31	722940	5144355	1	<10	4	60	70	26
315	S13-32	722937	5145164	<1	<10	3	49	58	27
316	S13-33	722914	5145013	<1	<10	2	34	49	19
317	S13-34	722932	5144813	-	<10	3	37	51	19
318	S13-35	722933	5144708	7	<10	<1	29	41	14
319	S13-36	722940	5144597	<1	<10	<1	24	46	17
320	S13-37	722940	5144508	2	<10	<1	25	46	16
321	S14-1	723311	5141663	2	<10	<1	41	44	17
322	S14-2	723298	5141767	2	<10	<1	44	44	20

323	S14-3	723302	5141854	2	<10	<1	35	44	19
324	S14-4	723288	5141961	5	<10	9	50	73	42
325	S14-5	723285	5142063	<1	<10	<1	27	53	20
326	S14-6	723284	5142154	6	<10	5	71	226	40
327	S14-7	723273	5142259	2	<10	<1	61	61	22
328	S14-8	723286	5142365	4	<10	3	93	103	32
329	S14-9	723273	5142463	<1	<10	<1	33	59	22
330	S14-10	723256	5142562	1	<10	<1	31	56	21
331	S14-11	723240	5142665	1	<10	<1	41	60	21
332	S14-12	723238	5142761	2	<10	<1	43	64	23
333	S14-13	723236	5142874	2	<10	<1	33	58	24
334	S14-14	723224	5142972	1	<10	<1	40	74	26
335	S14-15	723236	5143066	2	<10	<1	36	68	24
336	S14-16	723225	5143182	4	<10	3	50	82	45
337	S14-17	723244	5143270	3	<10	2	50	79	39
338	S14-18	723206	5143367	3	<10	3	54	77	28
339	S14-19	723203	5143467	<1	<10	<1	33	55	20
340	S14-20	723197	5143561	<1	<10	<1	20	44	17
341	S14-21	723187	5143664	1	<10	<1	21	45	16
342	S14-22	723180	5143760	4	<10	<1	28	49	18
343	S14-23	723175	5143865	<1	<10	<1	28	54	20
344	S14-24	723160	5143960	<1	<10	<1	27	53	18
345	S14-25	723155	5144061	3	<10	2	61	60	25
346	S14-26	723146	5144169	1	<10	1	38	65	23
347	S14-27	723147	5144259	2	<10	5	62	103	36
348	S14-28	723115	5144992	<1	<10	<1	33	55	26
349	S14-29	723117	5145115	1	<10	<1	41	60	25
350	S15-1	723450	5141528	4	<10	<1	38	46	21
351	S15-2	723448	5141623	5	<10	3	43	46	22
352	S15-3	723445	5141724	3	<10	<1	39	53	21
353	S15-4	723442	5141823	7	<10	<1	49	51	20
354	S15-5	723434	5141924	1	<10	<1	43	61	36
355	S15-6	723434	5142024	2	<10	<1	38	54	21
356	S15-7	723429	5142128	4	<10	3	80	229	43
357	S15-8	723426	5142231	2	<10	<1	49	64	22
358	S15-9	723419	5142325	2	<10	2	53	67	26
359	S15-10	723417	5142422	1	<10	<1	31	53	20
360	S15-11	723415	5142527	4	<10	4	63	71	28
361	S15-12	723410	5142635	3	<10	3	30	56	20
362	S15-13	723407	5142738	3	<10	7	68	80	30
363	S15-14	723401	5142823	3	<10	4	62	75	29
364	S15-15	723400	5142925	6	<10	12	73	94	40
365	S15-16	723393	5143144	2	<10	3	52	64	25
366	S15-17	723384	5143231	1	<10	1	43	66	32
367	S15-18	723388	5143326	4	<10	6	55	62	34
368	S15-19	723382	5143426	2	<10	4	50	86	33
369	S15-20	723376	5143520	5	<10	7	44	79	31

370	S15-21	723380	5143623	2	<10	5	55	81	27
371	S15-22	723371	5143724	3	<10	2	17	38	13
372	S15-23	723368	5143821	1	<10	1	34	41	16
373	S15-24	723364	5143923	2	<10	3	33	51	20
374	S15-25	723355	5144018	2	<10	3	37	44	21
375	S15-26	723350	5144123	<1	<10	3	28	48	21
376	S15-27	723356	5144223	<1	<10	2	26	46	18
377	S15-28	723338	5144857	<1	<10	2	31	48	22
378	S15-29	723335	5144937	3	<10	2	34	52	21
379	S15-30	723295	5145056	1	<10	2	40	56	26
380	S15-31	723316	5145122	5	<10	5	50	53	28
381	S16-1	723662	5141234	<1	<10	<1	45	42	22
382	S16-2	723653	5141532	2	<10	<1	48	47	30
383	S16-3	723648	5141633	1	<10	<1	47	61	22
384	S16-4	723644	5141730	6	<10	4	71	42	21
385	S16-5	723642	5141833	1	<10	1	33	47	25
386	S16-6	723637	5141931	3	<10	<1	54	50	19
387	S16-7	723624	5142043	8	<10	1	29	53	21
388	S16-8	723629	5142132	5	<10	4	83	72	26
389	S16-9	723624	5142233	<1	<10	1	37	56	22
390	S16-10	723621	5142332	<1	<10	<1	37	59	26
391	S16-11	723618	5142432	1	<10	<1	31	51	21
392	S16-12	723614	5142533	<1	<10	<1	45	57	20
393	S16-13	723611	5142633	<1	<10	2	40	63	24
394	S16-14	723608	5142733	<1	<10	<1	31	52	21
395	S16-15	723605	5142830	6	<10	<1	35	65	25
396	S16-16	723601	5142930	3	<10	5	74	78	40
397	S16-17	723598	5143030	<1	<10	3	41	61	31
398	S16-18	723596	5143131	6	<10	7	60	80	38
399	S16-19	723587	5143228	<1	<10	3	57	68	39
400	S16-20	723584	5143333	2	<10	2	45	65	26
401	S16-21	723578	5143431	10	<10	8	73	78	60
402	S16-22	723571	5143536	<1	<10	4	44	63	37
403	S16-23	723571	5143632	<1	<10	3	45	63	33
404	S16-24	723568	5143730	1	<10	3	38	60	23
405	S16-25	723566	5143831	<1	<10	2	33	43	18
406	S16-26	723563	5143930	1	<10	3	41	53	23
407	S16-27	723561	5144032	7	<10	4	44	66	23
408	S16-28	723555	5144132	<1	<10	<1	20	40	16
409	S16-29	723528	5144828	4	<10	4	42	87	33
410	S16-30	723522	5145030	3	<10	5	52	69	35
411	S16-31	723518	5145129	8	<10	7	70	70	39
412	S17-1	723854	5141337	<1	<10	<1	25	40	19
413	S17-2	723853	5141436	38	<10	2	168	31	18
414	S17-3	723852	5141538	2	<10	2	48	49	30
415	S17-4	723847	5141637	4	<10	1	102	48	21
416	S17-5	723844	5141741	<1	<10	2	37	46	21

417	S17-6	723840	5141846	6	<10	2	75	59	20
418	S17-7	723840	5141945	3	<10	1	86	65	23
419	S17-8	723836	5142044	2	<10	<1	40	59	20
420	S17-9	723827	5142140	6	<10	5	74	84	25
421	S17-10	723825	5142239	1	<10	<1	46	75	25
422	S17-11	723826	5142329	3	<10	3	74	95	28
423	S17-12	723811	5142487	3	<10	1	27	58	19
424	S17-13	723817	5142593	<1	<10	2	44	69	31
425	S17-15	723809	5142737	2	<10	3	56	89	34
426	S17-16	723806	5142832	6	<10	7	76	106	37
427	S17-17	723802	5142935	1	<10	<1	42	64	27
428	S17-18	723797	5143037	1	<10	1	62	96	28
429	S17-19	723790	5143140	2	<10	<1	42	59	23
430	S17-20	723787	5143230	2	<10	2	48	82	35
431	S17-21	723788	5143331	4	<10	4	51	62	27
432	S17-22	723778	5143442	2	<10	<1	30	43	13
433	S17-23	723759	5143587	4	<10	5	67	76	39
434	S17-24	723776	5143641	30	<10	8	81	82	35
435	S17-25	723776	5143743	12	<10	7	56	81	27
436	S17-26	723761	5143834	2	<10	2	45	66	23
437	S17-27	723759	5143938	3	<10	7	67	101	48
438	S17-28	723754	5144057	1	<10	1	36	64	25
439	S17-29	723755	5144147	3	<10	<1	16	32	11
440	S17-30	723729	5144748	<1	<10	2	40	75	27
441	S17-31	723729	5144826	<1	<10	2	51	73	35
442	S17-32	723727	5144938	3	<10	<1	31	42	15
443	S17-33	723722	5145038	1	<10	1	44	76	28
444	S17-34	723719	5145133	20	<10	4	63	70	23
445	S18-1	724070	5141148	2	<10	2	32	48	19
446	S18-2	724064	5141248	6	<10	1	43	57	23
447	S18-3	724060	5141348	11	<10	2	71	53	25
448	S18-4	724059	5141448	5	<10	2	56	52	20
449	S18-5	724054	5141550	3	<10	2	45	48	19
450	S18-6	724050	5141649	4	<10	<1	37	44	18
451	S18-7	724044	5141748	2	<10	2	83	48	20
452	S18-8	724041	5141848	3	<10	2	34	62	21
453	S18-9	724039	5141949	2	<10	2	41	61	20
454	S18-10	724034	5142048	1	<10	<1	32	60	20
455	S18-11	724033	5142146	2	<10	1	36	61	21
456	S18-12	724027	5142251	3	<10	4	65	133	34
457	S18-13	724027	5142348	2	<10	<1	30	60	20
458	S18-14	724020	5142545	2	<10	2	26	54	18
459	S18-15	724012	5142646	3	<10	3	44	75	23
460	S18-16	724010	5142745	2	<10	1	28	55	17
461	S18-17	724010	5142848	2	<10	<1	40	72	24
462	S18-18	724004	5142947	1	<10	<1	32	54	18
463	S18-19	723997	5143045	2	<10	3	58	67	20

464	S18-20	723989	5143245	2	<10	3	47	77	28
465	S18-21	723970	5143350	2	<10	2	29	51	18
466	S18-22	723980	5143453	1	<10	5	51	69	15
467	S18-23	723975	5143536	2	<10	2	44	49	20
468	S18-24	723967	5143645	4	<10	9	43	52	18
469	S18-25	723966	5143943	5	<10	2	22	44	15
470	S18-26	723938	5144645	2	<10	<1	27	60	19
471	S18-27	723919	5144739	1	<10	5	65	83	54
472	S18-28	723933	5144845	<1	<10	<1	62	87	33
473	S18-29	723928	5144944	<1	<10	3	78	99	46
474	S18-30	723924	5145046	1	<10	<1	85	101	45
475	S18-31	723927	5145096	<1	<10	<1	35	51	19
476	S19-1	724281	5141065	15	<10	4	39	56	37
477	S19-2	724265	5141151	4	<10	3	36	34	15
478	S19-3	724263	5141257	4	<10	3	111	58	38
479	S19-4	724258	5141356	2	<10	1	48	59	31
480	S19-5	724256	5141462	5	<10	<1	47	63	27
481	S19-6	724242	5141556	<1	<10	<1	42	55	22
482	S19-7	724245	5141753	1	<10	1	45	62	23
483	S19-8	724241	5141859	5	<10	2	51	66	24
484	S19-9	724235	5141955	<1	<10	1	31	45	18
485	S19-10	724233	5142067	1	<10	1	49	65	22
486	S19-11	724215	5142485	2	<10	3	50	78	24
487	S19-12	724216	5142543	1	<10	2	37	52	19
488	S19-13	724127	5144936	<1	<10	4	78	98	39
489	S19-14	724133	5144850	2	<10	6	59	79	48
490	S19-15	724134	5144753	1	<10	2	58	69	31
491	S19-16	724137	5144655	1	<10	2	61	65	45
492	S20-1	724650	5142072	<1	<10	<1	49	67	24
493	S20-2	724640	5141972	<1	<10	<1	26	48	18
494	S20-3	724638	5141868	<1	<10	<1	21	43	18
495	S20-4	724644	5141768	<1	<10	<1	20	38	15
496	S2-5	724651	5141365	1	<10	<1	19	38	16
497	S20-6	724613	5141246	1	<10	2	55	42	21
498	S20-7	724597	5141133	<1	<10	<1	25	44	19
499	ov01	722145	5144185	3	<1	<10	32	43	15
500	ov02	722139	5144185	5	<1	<10	39	59	19
501	ov03	722114	5144169	3	<1	<10	29	156	50
502	ov04	722055	5144211	3	<1	<10	37	155	43
503	ov05	722079	5144224	2	<1	<10	33	134	36
504	ov06	722107	5144242	3	<1	<10	31	61	19
505	ov07	722089	5144304	2	<1	<10	37	113	33
506	ov08	722064	5144297	2	<1	<10	31	89	22
507	ov09	722029	5144286	2	<1	<10	30	80	22
508	ov10	721999	5144339	15	23	20	4510	3554	130
509	Oval	722023	5144354	3	<1	<10	181	183	27

510	ov12	722049	5144368	8	3	<10	124	97	25
511	ov14	722015	5144400	5	<1	<10	155	191	27
512	ov15	721982	5144385	4	<1	<10	63	76	13
513	ov16	721944	5144417	2	<1	<10	183	171	22
514	ov17	721966	5144429	2	<1	<10	41	56	15
515	ov18	721990	5144452	4	<1	<10	61	57	13
516	ov19	722011	5144478	8	3	5	124	97	25
517	ov30	722268	5144146	6	<10	3	37	57	23
518	ov31	722245	5144134	<1	<10	<1	32	56	20
519	ov32	722223	5144122	1	<10	2	30	55	22
520	ov33	722200	5144110	2	<10	1	36	60	23
521	ov34	722177	5144098	<1	<10	<1	33	61	22
522	ov35	722155	5144086	LNR	LNR	LNR	LNR	LNR	LNR
523	ov36	722140	5144074	7	<10	2	41	53	21
524	ov37	722109	5144062	3	<10	<1	43	54	23
525	ov38	722079	5144050	2	<10	<1	45	53	23
526	ov39	722244	5144178	2	<10	<1	27	45	18
527	ov40	722221	5144178	2	<10	<1	34	54	20
528	ov41	722190	5144165	<1	<10	<1	32	50	20
529	ov42	722168	5144153	2	<10	1	29	45	17
530	ov43	722145	5144141	<1	<10	<1	28	96	34
531	ov44	722122	5144129	<1	<10	<1	29	53	21
532	ov45	722100	5144117	2	<10	<1	31	52	22
533	ov46	722077	5144106	1	<10	<1	34	54	23
534	ov47	722054	5144094	1	<10	<1	32	47	20
535	ov48	722031	5144093	2	<10	<1	25	43	17
536	ov49	722204	5144210	1	<10	<1	31	49	20
537	ov50	722181	5144209	<1	<10	<1	32	43	16
538	ov51	722158	5144198	2	<10	2	30	49	20
539	ov52	722090	5144162	2	<10	4	36	64	23
540	ov53	722068	5144139	3	<10	<1	42	61	23
541	ov54	722045	5144138	1	<10	<1	33	57	24
542	ov55	722022	5144126	3	<10	<1	37	49	23
543	ov56	722000	5144114	2	<10	<1	28	42	18
544	ov57	722171	5144276	<1	<10	<1	29	52	20
545	ov58	722148	5144264	2	<10	<1	26	48	18
546	ov59	722133	5144252	1	<10	<1	25	48	18
547	ov60	722035	5144204	3	<10	<1	42	55	23
548	ov61	722012	5144192	2	<10	<1	35	55	23
549	ov62	721990	5144180	2	<10	<1	26	41	18
550	ov63	721967	5144168	6	<10	<1	37	52	21
551	ov64	722161	5144342	1	<10	<1	37	58	21
552	ov65	722138	5144319	1	<10	<1	28	52	19
553	ov66	722115	5144318	<1	<10	<1	30	52	19
554	ov67	722009	5144281	2	<10	<1	64	56	18
555	ov68	721986	5144269	1	<10	<1	26	48	18
556	ov69	721964	5144257	<1	<10	<1	26	44	18

557	ov70	721933	5144245	3	<10	<1	32	52	24
558	ov71	722112	5144396	1	<10	<1	44	57	21
559	ov72	722090	5144384	<1	<10	<1	36	55	19
560	ov73	722067	5144372	1	<10	<1	39	57	18
561	ov74	721977	5144324	3	<10	2	64	60	27
562	ov75	721954	5144312	7	<10	<1	29	46	19
563	ov76	721939	5144301	1	<10	<1	39	50	19
564	ov77	721916	5144289	3	<10	<1	40	48	21
565	ov78	722088	5144429	3	<10	<1	40	60	21
566	ov79	722058	5144416	<1	<10	<1	45	65	19
567	ov80	722035	5144404	3	<10	<1	56	66	20
568	ov81	722005	5144392	2	<10	<1	41	60	17
569	ov82	721960	5144368	<1	<10	<1	70	104	23
570	ov83	721937	5144367	2	<10	<1	38	46	17
571	ov84	721922	5144356	<1	<10	<1	33	48	19
572	ov85	721899	5144344	8	<10	<1	31	49	20
573	ov86	722071	5144472	1	<10	<1	56	77	22
574	ov87	722041	5144460	<1	<10	<1	65	84	20
575	ov88	722018	5144448	2	<10	2	64	82	22
576	ov89	721996	5144436	3	<10	<1	187	270	35
577	ov90	721927	5144412	3	<10	<1	48	67	20
578	ov91	721905	5144400	1	<10	<1	30	38	15
579	ov92	721890	5144388	1	<10	<1	34	46	18
580	ov93	722046	5144527	11	<10	1	178	144	28
581	ov94	722023	5144515	4	<10	3	244	217	30
582	ov95	722001	5144503	3	<10	<1	661	473	39
583	ov96	721978	5144491	13	<10	4	708	501	41
584	ov97	721956	5144479	13	<10	5	356	821	64
585	ov98	721933	5144467	<1	<10	<1	60	82	21
586	ov99	721910	5144467	1	<10	1	49	60	21
587	ov100	721887	5144455	2	<10	<1	49	60	21
588	ov102	721999	5144548	2	<10	<1	151	122	24
589	ov103	721977	5144536	16	<10	4	159	128	28
590	ov104	721954	5144535	22	40	28	2110	966	61
591	ov105	721916	5144511	35	<10	5	397	301	31
592	ov106	721893	5144499	5	<10	<1	40	56	20
593	ov107	721871	5144487	2	<10	<1	43	56	21
594	ov108	721967	5144591	2	<10	3	68	84	23
595	ov109	721944	5144579	3	<10	3	125	97	30
596	ov110	721922	5144567	5	<10	2	218	217	28
597	ov111	721907	5144555	3	<10	<1	77	104	23
598	ov112	721884	5144544	<1	<10	<1	70	103	26
599	ov113	721861	5144532	5	<10	<1	42	58	21
600	ov114	721839	5144520	<1	<10	<1	35	55	20
601	ov115	721928	5144612	5	<10	<1	51	58	21
602	ov116	721905	5144600	3	<10	<1	30	49	17
603	ov117	721882	5144599	3	20	3	52	59	22

604	ov118	721859	5144587	<1	<10	3	44	47	19
605	ov119	721837	5144575	6	<10	<1	36	75	22
606	ov120	721806	5144563	7	<10	<1	35	63	21
607	ov121	721791	5144551	2	<10	3	56	146	31
608	ov122	721888	5144655	1	<10	2	47	72	24
609	ov123	721857	5144654	5	<10	5	66	81	27
610	ov124	721827	5144642	<1	<10	2	46	69	24
611	ov125	721804	5144630	2	<10	2	37	59	22
612	ov126	721781	5144618	2	<10	2	56	67	23
613	ov127	721751	5144605	<1	<10	1	27	50	18
614	ov129	721840	5144698	5	<10	4	62	81	26
615	ov130	721817	5144686	11	<10	8	93	102	31
616	ov131	721795	5144674	4	<10	12	300	597	67
617	ov132	721772	5144673	9	<10	1	510	87	24
618	ov133	721749	5144661	2	<10	<1	186	47	20
619	ov134	721726	5144649	2	<10	<1	104	53	25
620	ov135	721704	5144637	4	<10	<1	84	47	25
621	ov136	721792	5144740	7	<10	3	95	75	28
622	ov137	721777	5144729	4	<10	<1	292	271	36
623	ov138	721755	5144717	11	<10	2	71	63	26
624	ov139	721732	5144705	2	<10	<1	42	49	22
625	ov140	721709	5144693	3	<10	<1	56	63	27
626	ov141	721678	5144692	2	<10	<1	38	42	19
627	ov142	721783	5144773	3	<10	2	50	48	20
628	ov143	721752	5144772	1	<10	<1	33	44	21
629	ov144	721738	5144761	5	<10	<1	62	69	27
630	ov145	721707	5144748	9	<10	<1	63	60	23
631	ov146	721692	5144737	2	<10	<1	51	64	25
632	ov147	721661	5144736	6	<10	<1	63	62	26
633	ov148	721735	5144816	1	<10	<1	48	58	25
634	20	721945	5144494	59	39	30	5257	5256	256
635	21	721974	5144507	12	6	5	907	662	57
636	22	721954	5144498	9	34	20	2083	1662	77
637	24	721944	5144559	32	15	5	1363	854	65

JORC 2012 TABLE

Section 1. Sampling Techniques and Data

Criteria	JORC Code explanation	Commentary
		Yambat project
Sampling techniques	<ul style="list-style-type: none"> Nature and quality of sampling (eg cut channels, random chips, or specific specialised industry standard measurement tools appropriate to the minerals under investigation, such as down hole gamma sondes, or handheld XRF instruments, etc). These examples should not be taken as limiting the broad meaning of sampling. Include reference to measures taken to ensure sample representativity and the appropriate calibration of any measurement tools or systems used. Aspects of the determination of mineralisation that are Material to the Public Report. In cases where ‘industry standard’ work has been done this would be relatively simple (eg ‘reverse circulation drilling was used to obtain 1 m samples from which 3 kg was pulverised to produce a 30 g charge for fire assay’). In other cases, more explanation may be required, such as where there is coarse gold that has inherent sampling problems. Unusual commodities or mineralisation types (eg submarine nodules) may warrant disclosure of detailed information. 	<p>Soil sediment samples were collected from a nominal depth of 20 to 30 centimeters. Approximately 200 grams of material was collected from the bottom of the hole and sieved to -0.75mm. All soil and stream sediment samples were collected between 2022 and 2023.</p> <p>Grab samples were collected from outcrops in approximately 2–3 kg increments. In zones exhibiting alteration, samples were taken at 5 m intervals along the strike of the alteration zone to ensure representative coverage.</p> <p>The number of samples is included in the main body of the report.</p> <p>Samples were submitted to SGS-Mongolia in Ulaanbaatar for analysis for multi-element suite suitable for soil analysis.</p>
Drilling techniques	<ul style="list-style-type: none"> Drill type (eg core, reverse circulation, open-hole hammer, rotary air blast, auger, Bangka, sonic, etc) and details (eg core diameter, triple or standard tube, depth of diamond tails, face-sampling bit or other type, whether core is oriented and if so, by what method, etc). 	<p>No new drilling is reported in this announcement.</p>
Drill sample recovery	<ul style="list-style-type: none"> Method of recording and assessing core and chip sample recoveries and results assessed. Measures taken to maximise sample recovery and ensure representative nature of the samples. Whether a relationship exists between sample recovery and grade and whether sample bias may have occurred due to preferential loss/gain of fine/coarse material. 	<p>No new drilling is reported in this announcement.</p>
Logging	<ul style="list-style-type: none"> Whether core and chip samples have been geologically and geotechnically logged to a level of detail to support appropriate Mineral Resource estimation, mining studies and metallurgical studies. Whether logging is qualitative or quantitative in nature. Core (or costean, channel, etc) photography. 	<p>No new drilling is reported in this announcement.</p>

	<ul style="list-style-type: none"> The total length and percentage of the relevant intersections logged. 	
Sub-sampling techniques and sample preparation	<ul style="list-style-type: none"> If core, whether cut or sawn and whether quarter, half or all core taken. If non-core, whether riffled, tube sampled, rotary split, etc and whether sampled wet or dry. For all sample types, the nature, quality and appropriateness of the sample preparation technique. Quality control procedures adopted for all sub-sampling stages to maximise representivity of samples. Measures taken to ensure that the sampling is representative of the in situ material collected, including for instance results for field duplicate/second-half sampling. Whether sample sizes are appropriate to the grain size of the material being sampled. 	<p>No new drilling is reported in this announcement.</p> <p>All samples submitted for analysis were prepared by SGS Laboratory in Ulaanbaatar using conventional and appropriate procedures. The samples were dried and weighed (WGH70), crushed (CRU23), split (SPL27), pulverized (PUL46) and screened to confirm adequacy of pulverization (SCR34).</p> <p>All samples submitted for laboratory analysis were collected with volumes appropriate for the grain size of the material being sampled.</p>
Quality of assay data and laboratory tests	<ul style="list-style-type: none"> The nature, quality and appropriateness of the assaying and laboratory procedures used and whether the technique is considered partial or total. For geophysical tools, spectrometers, handheld XRF instruments, etc, the parameters used in determining the analysis including instrument make and model, reading times, calibrations factors applied and their derivation, etc. Nature of quality control procedures adopted (eg standards, blanks, duplicates, external laboratory checks) and whether acceptable levels of accuracy (ie lack of bias) and precision have been established. 	<p>No geophysical tools were used to determine any element concentrations.</p> <p>All soil samples collected in 2022 and 2023 were assayed by SGS using methods IC12A and IC12M after an Aqua Regia digestion.</p> <p>Batches of grab samples were analysed by ICPOES and ICP-MS following either four-acid digest or fusion with sodium peroxide.</p>
Verification of sampling and assaying	<ul style="list-style-type: none"> The verification of significant intersections by either independent or alternative company personnel. The use of twinned holes. Documentation of primary data, data entry procedures, data verification, data storage (physical and electronic) protocols. Discuss any adjustment to assay data. 	<p>Significant soil anomalies have been identified by the project geologists and have been verified by the managing director</p> <p>No twin holes have been completed</p> <p>Primary sampling data is collected in a set of standard Excel templates</p> <p>No adjustments to any assay data have been undertaken</p>
Location of data points	<ul style="list-style-type: none"> Accuracy and quality of surveys used to locate drill holes (collar and down-hole surveys), trenches, mine workings and other locations used in Mineral Resource estimation. Specification of the grid system used. Quality and adequacy of topographic control. 	<p>All coordinates of sample collection sites were collected with a handheld GPS unit in WGS84/UTM 46N.</p> <p>All collar positions of drill holes were located initially by hand-held GPS with a +/- 3m margin of error and later will be surveyed by a professional surveyor using DGPS equipment.</p>

		<p>All coordinates will be collected by DGPS, converted to the local grid and recorded in WGS84/UTM 46N.</p> <p>Professional-Engineering LLC conducted a high-resolution drone survey in September 2024. Three topographic base stations were installed and accurately surveyed using high precision GPS. All drillholes collars will be surveyed using total station survey equipment. This equipment comprised 3x Sokkia GNSS GPS GRX2 and associated equipment.</p>
<i>Data spacing and distribution</i>	<ul style="list-style-type: none"> • <i>Data spacing for reporting of Exploration Results.</i> • <i>Whether the data spacing and distribution is sufficient to establish the degree of geological and grade continuity appropriate for the Mineral Resource and Ore Reserve estimation procedure(s) and classifications applied.</i> • <i>Whether sample compositing has been applied.</i> 	<p>Soil sampling was conducted between 2022 and 2023 on a 200 metre by 50 metre (regional-scale) grid pattern, oriented either north-south or east-west, and on a northeast-southwest grid at 50 metre by 25 metre spacing around the Oval prospect.</p> <p>Grab samples were collected at the North Oval and Quartz Hill areas, targeting visually obvious features rather than following a fixed sampling grid.</p> <p>The sampling to date is inadequate to establish geological and grade continuity for the purposes of Mineral Resource estimation.</p> <p>No sample compositing has been applied.</p>
<i>Orientation of data in relation to geological structure</i>	<ul style="list-style-type: none"> • <i>Whether the orientation of sampling achieves unbiased sampling of possible structures and the extent to which this is known, considering the deposit type.</i> • <i>If the relationship between the drilling orientation and the orientation of key mineralised structures is considered to have introduced a sampling bias, this should be assessed and reported if material.</i> 	<p>The sampling is preliminary in nature and is currently not possible to assess whether sampling is unbiased.</p> <p>Not applicable (see comments above)</p>
<i>Sample security</i>	<ul style="list-style-type: none"> • <i>The measures taken to ensure sample security.</i> 	<p>Unique sample numbers were retained during the whole process.</p> <p>Samples were placed into calico bags then transported by road. Samples were sent to SGS laboratory in Ulaanbaatar for preparation.</p>
<i>Audits or reviews</i>	<ul style="list-style-type: none"> • <i>The results of any audits or reviews of sampling techniques and data.</i> 	<p>No audits or reviews have been conducted at this stage.</p>

Section 2 Reporting of Exploration Results

Criteria	JORC Code explanation	Commentary
		Yambat project
Mineral tenement and land tenure status	<ul style="list-style-type: none"> Type, reference name/number, location and ownership including agreements or material issues with third parties such as joint ventures, partnerships, overriding royalties, native title interests, historical sites, wilderness or national park and environmental settings. The security of the tenure held at the time of reporting along with any known impediments to obtaining a licence to operate in the area. 	<p>Exploration Licence “Yambat” (XV-020515), 10,606.77 ha, granted to Ragnarok Investment LLC on 25 April 2016.</p> <p>Shown on MRPAM Cadastral website as being valid as of 25 April 2025.</p> <p>No known impediments.</p>
Exploration done by other parties	<ul style="list-style-type: none"> Acknowledgment and appraisal of exploration by other parties. 	<p>Previous government geologic mapping at scales of 1:200,000 and 1:50,000.</p> <p>Activity prior to 2021 acquisition by Innova was limited to collection of 12 grab samples. These provided no information judged to be reliable enough for reporting due to limited suites of elements in laboratory results, absence of QA/QC practice. Subsequent field work including grab sampling by the company and its subsidiaries in following years fully covered these areas. Overall surface grab samples results are referred in general context in the Independent Geologist’s Report as part of Prospectus (dated and announced on April 30, 2024).</p>
Geology	<ul style="list-style-type: none"> Deposit type, geological setting and style of mineralisation. 	<p>Demonstrated magmatic sulphide Cu-Ni-PGM mineralisation hosted in a Permian mafic-ultramafic intrusion, similar to numerous known examples in the Central Asian Orogenic Belt.</p> <p>The intrusion is adjacent to and at an oblique angle to major (presumably transcrustal) faults at a cratonal margin.</p> <p>The intrusion is flanked by spotted hornfels in an oval pattern measuring about 800m X 100m; gossan and copper staining occur along the contact.</p> <p>The Copper Ridge area lies along the NW–SE-trending Darvi–Bayanulaan Fault, recognized for its Cu–Au potential. It is underlain by Pre-Cambrian and Devonian metamorphic rocks, pyroclastic sequences, and basaltic units intruded by rhyolite porphyry dykes, porphyritic syenite, and monzodiorite. Cu–Au mineralization is associated with two stages of hydrothermal alteration:</p> <ul style="list-style-type: none"> Cordierite–actinolite–serpentine alteration with magnetite–pyrrhotite–chalcopyrite Overprinting silicic–sericite–chlorite alteration with quartz–carbonate–pyrite–chalcopyrite veins. <p>Preliminary geological interpretations from satellite imagery suggest possible intrusive-related or</p>

		structurally controlled mineralisation targets. Further field validation and drilling are ongoing to confirm deposit style.
<i>Drill hole Information</i>	<ul style="list-style-type: none"> • <i>A summary of all information material to the understanding of the exploration results including a tabulation of the following information for all Material drill holes:</i> <ul style="list-style-type: none"> – <i>easting and northing of the drill hole collar</i> – <i>elevation or RL (Reduced Level – elevation above sea level in metres) of the drill hole collar</i> – <i>dip and azimuth of the hole</i> – <i>down hole length and interception depth - hole length.</i> • <i>If the exclusion of this information is justified on the basis that the information is not Material and this exclusion does not detract from the understanding of the report, the Competent Person should clearly explain why this is the case.</i> 	All significant drilling results have been previously reported (ASX 30 Jan 2025 Quarterly Activities/Appendix 5B Cash Flow Report)
<i>Data aggregation methods</i>	<ul style="list-style-type: none"> • <i>In reporting Exploration Results, weighting averaging techniques, maximum and/or minimum grade truncations (eg cutting of high grades) and cut-off grades are usually Material and should be stated.</i> • <i>Where aggregate intercepts incorporate short lengths of high grade results and longer lengths of low grade results, the procedure used for such aggregation should be stated and some typical examples of such aggregations should be shown in detail.</i> • <i>The assumptions used for any reporting of metal equivalent values should be clearly stated.</i> 	Drill hole intersection values are weighted averages over visually picked continuous stretches of anomalous levels in Cu, Ni, E3 (Au+Pt+Pd), and Co.
<i>Relationship between mineralisation widths and intercept lengths</i>	<ul style="list-style-type: none"> • <i>These relationships are particularly important in the reporting of Exploration Results.</i> • <i>If the geometry of the mineralisation with respect to the drill hole angle is known, its nature should be reported.</i> • <i>If it is not known and only the down hole lengths are reported, there should be a clear statement to this effect (eg ‘down hole length, true width not known’).</i> 	In the main area of Oval gabbroic intrusion, interpreted drillhole sections suggest intersections are moderately (70-45°) to highly (30-20°) oblique to the plane of mineralisation except for OVD022, 23 24, 25, 26 and 27, which are orientated at an acute angle to the strike of the mineralised Gabbro.
<i>Diagrams</i>	<ul style="list-style-type: none"> • <i>Appropriate maps and sections (with scales) and tabulations of intercepts should be included for any significant discovery being reported These should include, but not be limited to a plan view of drill hole collar locations and appropriate sectional views.</i> 	Included in the body of the report.

<p><i>Balanced reporting</i></p>	<ul style="list-style-type: none"> Where comprehensive reporting of all Exploration Results is not practicable, representative reporting of both low and high grades and/or widths should be practiced to avoid misleading reporting of Exploration Results. 	<p>No Mineral Resource Estimate is being reported.</p>
<p><i>Other substantive exploration data</i></p>	<ul style="list-style-type: none"> Other exploration data, if meaningful and material, should be reported including (but not limited to): geological observations; geophysical survey results; geochemical survey results; bulk samples – size and method of treatment; metallurgical test results; bulk density, groundwater, geotechnical and rock characteristics; potential deleterious or contaminating substances. 	<p>All the relevant data is included in the body of the report.</p> <p><u>Geophysical Investigation</u></p> <p>This report is on the initial geophysical results. The geophysical review and assessment is ongoing and the Company is continuing to review and assess the data collected for further interpretation of the results.</p> <p>Geophysical field data is collected by the contracted survey companies then reviewed by their contract geophysicist before submitted to geophysical consultants</p> <p>PDIP, AMT, and CSAMT field data were collected by Magtec LLC. Daily primary data were verified by Ronacher McKenzie Geoscience. The AMT and CSAMT inversion was also performed by Ronacher McKenzie Geoscience. (Previously reported in the announcement dated 07 Aug 2024 “Regional Exploration Identifies New Copper & Nickel Targets”.)</p> <p>An Array IP survey was conducted by Geo Oron LLC on a 200-meter by 25-meter grid, totaling 138.8 line kilometers. (Previously reported in the announcement dated 07 Aug 2024 “Regional Exploration Identifies New Copper & Nickel Targets”.)</p> <p>Regional magnetic surveys were completed. Geomaster LLC surveyed the eastern half of the site in 2023 with a 200 metre line spacing, and Geo Oron LLC surveyed the northern half in 2024 with a 100-meter line spacing.</p> <p>Gravity data were collected on a grid with spacing ranging from 25 meters by 25 meters, 100 metres by 200 metres, and 200 metres by 200 metres. Geomaster LLC collected the field data between 2022 and 2023. The data density is considered appropriate for the survey's purpose. The gravity inversion was performed by Magtec LLC.</p> <p>Downhole Electromagnetic (DHEM) survey:</p> <ul style="list-style-type: none"> Data was acquired by Logantek Mongolia LLC, supervised by Southern Geoscience Consultants. Each drillhole was surveyed using both a conventional loop position and a reverse-coupled loop position. A DigiAtlantis borehole probe was used to collect three components of the B-field response. Data collected was three components of the B-field response. A Zonge transmitter was used to transmit a current of approximately 30A through the

		<p>transmitter loop. A Generator and DC Power Supplies were utilised.</p> <p>Data processing of the DHEM survey was conducted by Southern Geoscience Consultants. The EM modelling approach constrains the numerical solution by aiming to match both calculated and measured data for all three components. The modelling presents multiple scenarios for the latest channels and strongest conductors, correlating with semi-massive to massive sulphide mineralisation at the Oval prospect. The EM modelling focused on conductive plates with high conductance, generating models where DHEM surveys detect mineralisation. This includes both in-hole anomalies and off-hole anomalies, where conductors are intercepted or detected away from the drillhole.</p> <p>All data were collected in WGS84 datum converted to UTM Zone N46 grid system.</p>
<p><i>Further work</i></p>	<ul style="list-style-type: none"> <i>The nature and scale of planned further work (eg tests for lateral extensions or depth extensions or large-scale step-out drilling).</i> <i>Diagrams clearly highlighting the areas of possible extensions, including the main geological interpretations and future drilling areas, provided this information is not commercially sensitive.</i> 	<p>Data analysis and interpretation work is in progress.</p> <p>Programs of follow up diamond drilling and geophysics aimed at defining mineralised gabbro at depth and in open directions are to be defined during the 2025 Q1.</p> <p>Drilling will recommence in mid-March 2025.</p> <p>DHEM surveys will be conducted on newly drilled boreholes.</p> <p>Regional geophysical surveys are planned for April to June 2025.</p> <p>A diagram indicating the deep target is included in the body of the report.</p>